

# The Human Brain

**Benchmark 14.26** Identify the major parts of the brain on diagrams or models.

Instructions: Go to <http://biology4me.weebly.com/sc912l1426-the-brain.html> and study the structure of the human brain.

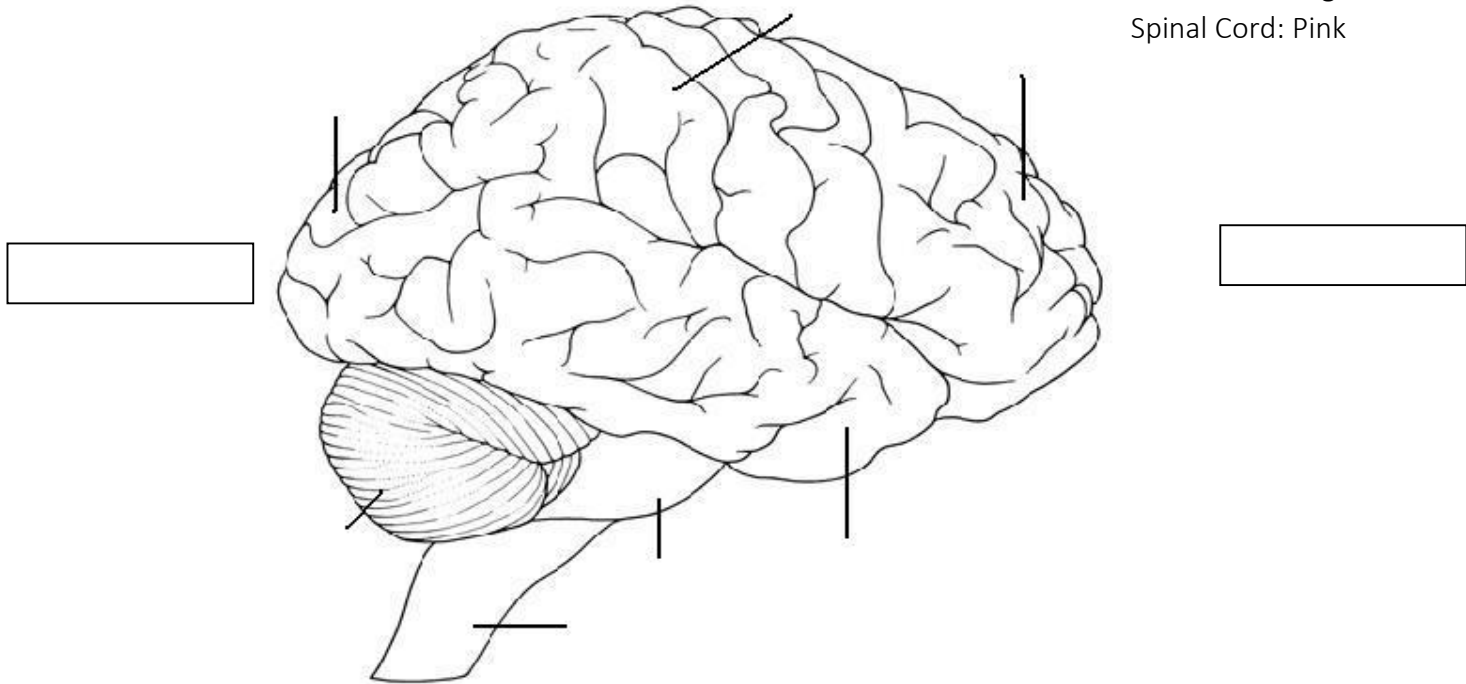
1. Write: Anterior or Posterior in the correct boxes below.
2. Color and label the images below according to the following key:

**Four brain lobes**

- Red: frontal lobe
- Orange: parietal lobe
- Green: temporal lobe
- Yellow: occipital lobe

**Brain Stem**

- Pons: Light Blue
- Medulla Oblongata: Dark Blue
- Spinal Cord: Pink



3. Use the picture to the right and the key below to color and label the cerebrum, the cerebellum, and the brain stem.

- Cerebrum: Red
- Cerebellum: Green
- Brain Stem: Blue
- Spinal Cord: Pink

