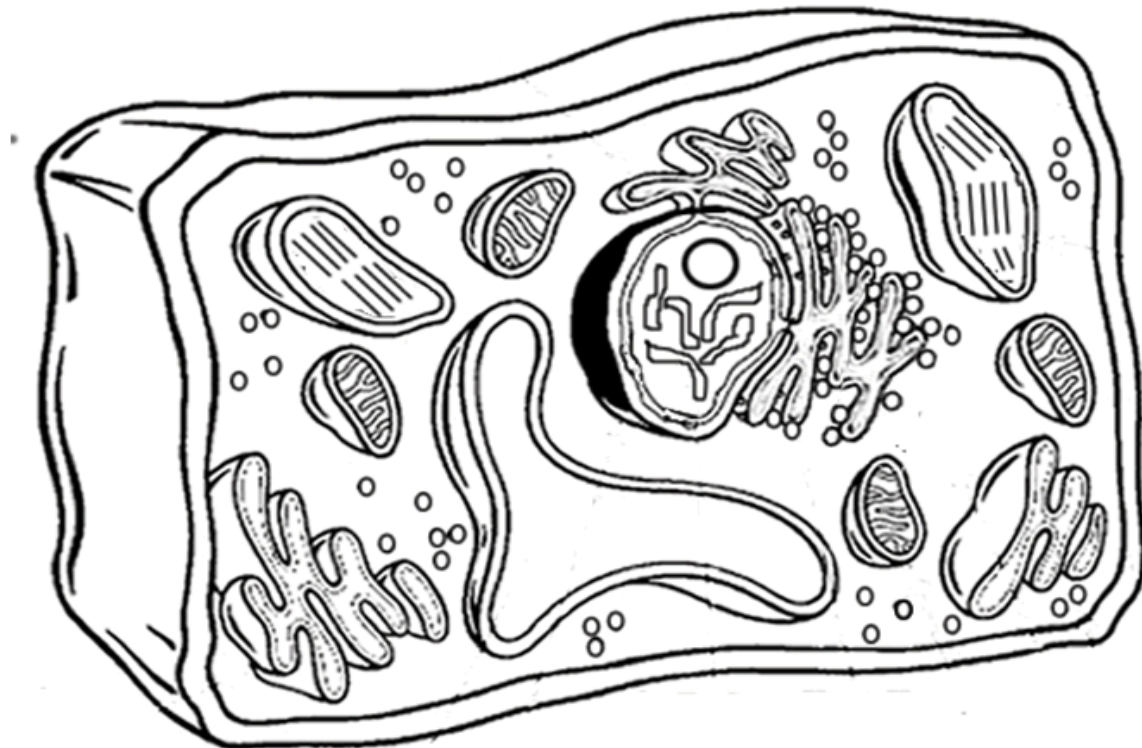


Plant Cell Coloring

Standard 14 Organization & Development of Living Organisms

SC.912.L.14.3 Compare and contrast the general structures of plant and animal cells; prokaryotic and eukaryotic cells.

Cell Membrane (orange) Cell Wall (dark green) Nucleolus (brown) Chloroplasts (light green) Ribosome (purple)	Cytoplasm (white) Golgi Apparatus (dark blue) Nucleoplasm (yellow) Mitochondria (red) Vacuole (light. Blue)	Chromatin (gray) Smooth Endoplasmic Reticulum (pink) Rough Endoplasmic Reticulum (pink)
---	--	--



Analysis

1. Name two things found in a plant cell that are not found in an animal cell:

2. How does the shape of a plant cell differ from that of an animal cell? _____

3. What is the function of the chloroplasts? _____

4. What is the function of the vacuole? _____

5. What is the function of the cell wall? _____

6. Cellulose makes up the cell wall of plant cells. What macromolecule category cellulose belongs to? _____